

Pumpkin Potholder

supplies

For (1) potholder:

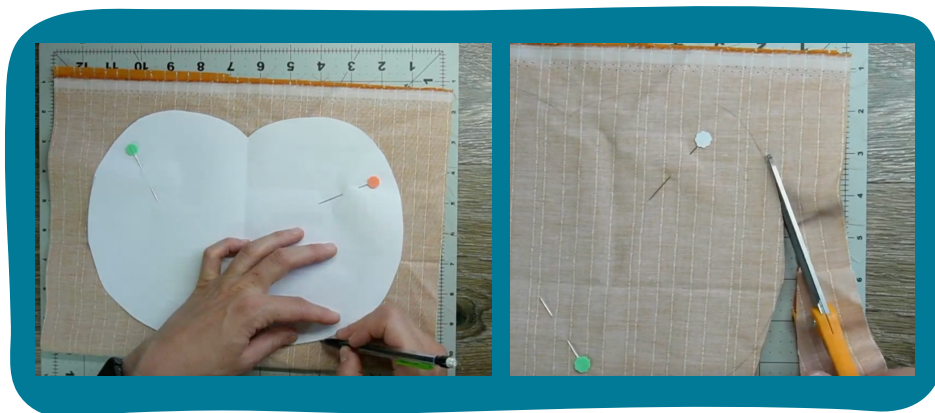
- Pumpkin fabric (2) 8.5" x 11"
- Green/stem fabric (1) 3" x 5"
- Batting (1) 8.5" x 11"
- Insul-bright (1) 8.5" x 11"

tools

- Sewing Machine & Thread
- Pins
- Iron
- Ironing board/mat
- Fabric Scissors
- Paper Scissors
- Marking tool

instructions

- 1 Print and cut out the pumpkin template.
- 2 Pin the template to the (2) layers of pumpkin fabric, trace with a marking tool, remove pins, and cut the pieces out. Repeat with the batting and the insul-bright.



Pumpkin Potholder

3

Take your green fabric (stem) fold and iron the long sides in 1/4" and then fold in half, and press.



4

Sew using a 1/4" seam allowance along the folded edge.

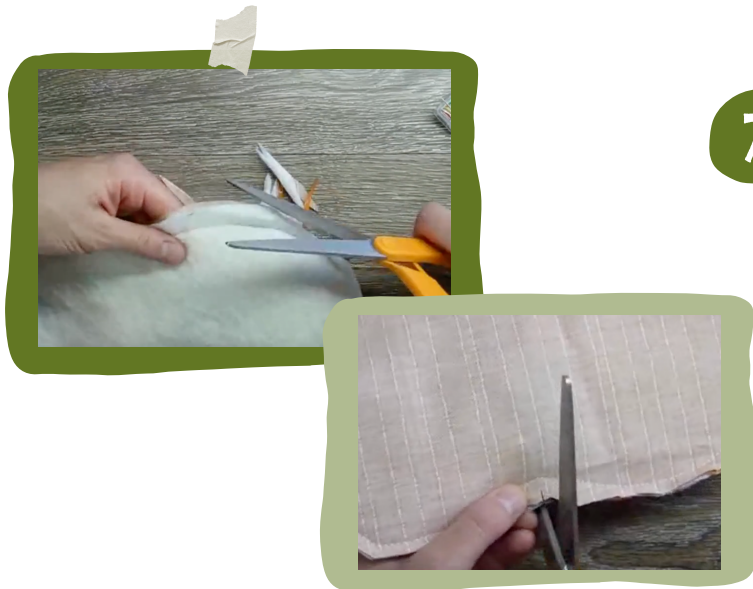
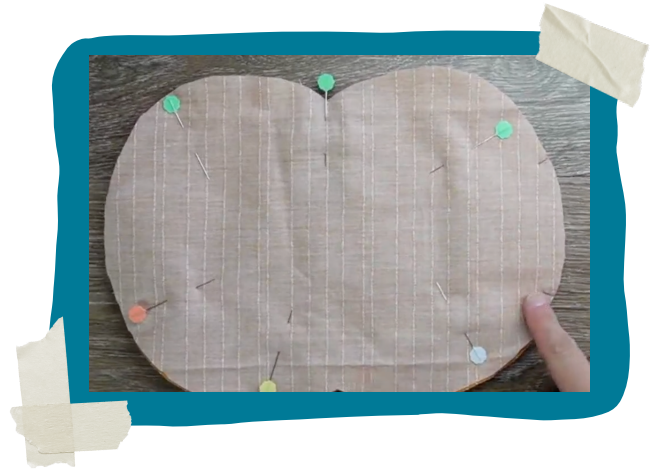


5

Layer your pieces: Starting with the batting, insul-bright, (1) layer of pumpkin fabric, the green fabric folded at the top with raw edges lined up with the raw edges of the pumpkin fabric, and then the last pumpkin fabric on top.

Pumpkin Potholder

- 6 Pin the pieces in place. Sew around the edge using a 1/2" seam allowance making sure to backstitch at the beginning and the end, and leaving a 3-4" opening.



- 7 Trim any excess batting or fabric around the edge and clip around the edge to make turning easier. Be careful not to cut through the seams. Cut small slits along the edge to help the pumpkin lay flat.

- 8 Going through the opening between the (2) pumpkin fabric layers turn the potholder right side out. Make sure to push out all of the corners.



Pumpkin Potholder

- 9 Using your iron press the pumpkin seams and fold in the raw edges of the opening to help when sewing it shut.



- 10 Topstitch around the edge using about a 1/4"-1/2" seam allowance all the way around, making sure to close the opening as you go.

- 11 Using a marking tool that will erase (I used a chalk pencil) mark the pumpkin curves and then sew them backstitching at the beginning and the end.



Pumpkin Potholder

12 Trim your threads, and you are finished!

you are ready to
use your potholder!



1"

Pumpkin Template

